

# CARDIOVIT AT-101

The budget-priced high-tech ECG device for general practitioners as well as hospitals

Ready for networking

with XML output



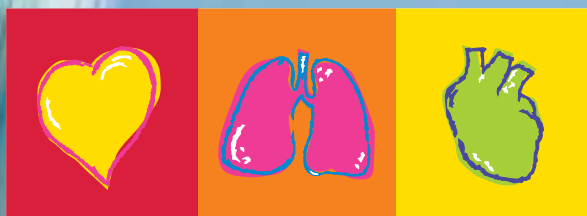
Possibility of data transfer  
to SCHILLER Data Management  
System SEMA-200

#### Performance:

- Intuitive and easy to use with direct keys for the most important functions
- 12-lead Resting ECG with standard ECG measurements
- Integrated graphical 3-channel LC display
- Measurements
- Easy Print: Integrated high-resolution thermal printer
- Various user-programmable report formats on internal or external printer
- Interface for external printer for printouts on standard paper
- Storage and serial data transfer for Resting ECG data to a PC (with memory option)

#### Options:

- Memory and data transfer to a PC or Information System via integrated serial interface
- XML data transfer to a PC or Information System via Ethernet or modem (needs memory option)
- Interpretation software
- Thrombolysis



# SCHILLER

www.schiller.ch

The Art of Diagnostics

# SCHILLER eXtensible Connectivity

## Optional XML Data Transmission (needs memory option):

- The AT-101 is available with the internal SCHILLER Communication Module (SCM), which transmits Resting ECG data on XML format to a PC or Information Systems via:
  - Ethernet interface; or
  - Built-in analogue modem (optional)
- This enables the AT-101 to be an integrated part of a larger systems solution
- Secure transmission of patient data via the Internet is possible using 1024-bit strong encryption
- Equipped with the add-on SCM Server, the SCHILLER Data Management System SEMA-200 can receive the XML output from the SCHILLER Communication Module



Ethernet and modem interfaces for XML output (optional)

**Asia**  
**SCHILLER Asia-Pacific**  
10 C, Jalan SS 3/33  
Taman Universiti  
47300 Petaling Jaya  
Selangor, Malaysia  
Phone +603 78 77 5336  
Fax +603 78 77 5744  
sales@schiller.com.my

**Austria**  
**SCHILLER Handelsgesellschaft mbH**  
Kampfmüllerweg 24  
A-4040 Linz  
Phone +43 732 70 99-0  
Fax +43 732 757 000  
sales@schiller.at

**C.I.S. & Russia**  
**SCHILLER AG**  
**Moscow Representative Office**  
Office 414, 1-st Yamskogo Polya 15  
125124 Moscow, Russia  
Phone/Fax  
+7 (095) 970 11 33,  
+7 (095) 956 29 10  
mail@schiller-ag.com  
www.schiller-cis.com

**France**  
**SCHILLER Médical S.A.S.**  
4, rue Louis Pasteur  
F-67162 Wissembourg/Cedex  
Phone +33 3 88 63 36 00  
Fax +33 3 88 94 12 82  
info@schiller.fr

**Germany**  
**SCHILLER Medizintechnik GmbH**  
Rudolf-Diesel-Strasse 14  
D-85521 Ottobrunn  
Phone +49 89 62 99 81-0  
Fax +49 89 609 50 90  
info@schillermed.de

**India**  
**SCHILLER Healthcare India Pvt. Ltd.**  
D.C. Silk Mills Compound, 'A' Wing,  
1st floor  
5, Chunawala Estate, Kondivitta Lane  
Andheri-Kurla Road, Andheri (E)  
Mumbai - 400 059, India  
Phone +91 22 826 35 20  
Fax +91 22 826 35 25  
schiller@vsnl.com

**Spain**  
**SCHILLER ESPAÑA, S.A.**  
Avenida Baviera, 12 - 14 Posterior  
E-28028 Madrid  
Phone +34 91 713 01 76  
Fax +34 91 355 79 33  
schiller@schiller-es.com

**Switzerland**  
**SCHILLER-Reomed AG**  
Riedstrasse 14  
CH-8953 Dietikon  
Phone +41 1 744 30 00  
Fax +41 1 740 37 10  
sales@schiller-reomed.ch

**Turkey**  
**SCHILLER TÜRKIYE**  
Halil Rifat Pasa Mah.  
Darülaceze Cadd.  
Perpa Ticaret Merkezi  
B/Blok No: 41 K: 2  
Okmeydanı-Sisli - Istanbul  
Phone +90 212 210 8681 (pbx)  
Fax +90 212 210 8684  
sales@schiller-turkiye.com

**USA**  
**SCHILLER America Inc.**  
11300 NW 41st Street  
Miami, Florida 33178  
Phone +1 786 845 06 20  
Fax +1 786 845 06 02  
sales@schilleramerica.com

## Technical Data CARDIOVIT AT-101:

### System:

**Dimensions:** 290 x 198 x 76 mm, approx. 2.6 kg

**Built-in monitor:** 76 x 57 mm effective display area, 320 x 240 dots resolution

**On-screen status indicators:** Battery status, date, time, power source

**Control panel and keyboard:** User-friendly, alphanumeric keyboard, LED indicator and LC display

**Power supply requirements:** 220 - 240 V (nominal), 50/60 Hz: 110 - 115 V (nominal), 50/60 Hz; stand-alone operation with built-in rechargeable battery; LED indicator for mains operation, integrated power supply unit

**Battery capacity:** 4 hours of normal use

**Power consumption:** Max. 28 VA

**Line frequency filter:** Distortion-free suppression of superimposed 50 or 60 Hz sinusoidal interferences by means of adaptive digital filtering (SCHILLER Powerline Filter SPP)

**Frequency range of digital recording system:** 0 - 150 Hz (IEC/AHA)

**Chart paper:** Thermo-reactive, Z-folded, 80 mm wide

**Printing process:** High-resolution thermal head printer, 8 dots/mm (amplitude axis), 40 dots/mm (time axis) @ 25 mm/s

**Interfaces:** RS-232 interface; data transmission to PC (SEMA-200) and external modem connection (memory option necessary); parallel port for external printer; optional Ethernet interface and optional internal modem for XML data transmission (memory option necessary)

**Memory:** Possibility to save up to 40 Resting ECG measurements (Option)

### Environmental conditions:

- Temperature, operating: 10° to 40° C
- Temperature, storage: -10° to 50° C
- Relative humidity: 25 to 95 % (no condensation)
- Pressure during operation: 700 to 1060 hPa

### Safety Standards:

**Safety standard:** IEC/EN 60601-1; UL 60601-1; C22.2 No. 601.1-M90; IEC/EN 60601-2-25; IEC/EN 60601-1-2 (EMC)

**Protection class:** I according to IEC/EN 60601-1 (with internal power supply)

**Applied Part:** CF according to IEC/EN 60601-1

**Conformity:** CE according to Directive 93/42/EEC (Medical Devices)

**Classification:** IIa according to Directive 93/92/EEC

### Technical Data for ECG:

**Patient input circuit:** Fully floating and isolated, defibrillation-protected (only with original SCHILLER patient cable)

### Monitor display:

- 3-channel display of the selected leads
- Heart Frequency, HF
- 25, 50 mm/s
- 5, 10, 20 mm/mV
- Filter status (on/off)
- Insufficient electrode contact

**Leads:** 12 simultaneous leads: Standard / Cabrera

**Chart printout speed:** 5/10/25/50 mm/s (manual print)

**Sensitivities:** 5/10/20 mm/mV, either automatically adjusted or manually selected

### Automatic lead programs:

- 3/6/12-channel presentations of 12 simultaneously recorded leads
- Numerous printout formats can be selected

### Data record:

- Patient data (name, age, height, weight, BP), user ID
- Listing of all ECG recording conditions (date, time, filter), (optional)
- Measurement program: ECG measurements results (intervals, amplitudes, electrical axes), average complexes with measurement reference markings
- Interpretation (C, optional) with adult and pediatric guidance
- Thrombolysis Software (only in combination with C option)

**Recording track:** 3/6/12-channel presentation, optimal positioning on a width of 72 mm (internal printer) or A4 (external printer), automatic baseline adjustment

**Filter:** Myogram filter (muscle tremor filter): 25 or 35 Hz, SCHILLER Baseline Stabilizer SBS, SCHILLER Smoothing Filter SSF

### ECG amplifier:

- Simultaneous recording of all 9 active electrode signals (= 12 leads)
- Sampling frequency: 1000 Hz
- Pacemaker detection:  $\geq \pm 2 \text{ mV} / \geq 0.1 \text{ ms}$

### Scope of delivery for CARDIOVIT AT-101 Standard:

CARDIOVIT AT-101 Resting ECG with 12 simultaneous leads, pacemaker detection, automatic ECG measurement

### Accessories:

- 1 10-lead patient cable
- 1 set of electrodes or disposable electrodes
- 1 power cable
- 1 pack chart paper
- Operating manual

### Software options:

- Thrombolysis Software
- Memory for up to 40 measurements
- Computer-aided ECG interpretation for pediatric and adult ECGs (C)
- SEMA-200 PC software to save, validate and archive ECG data on PC

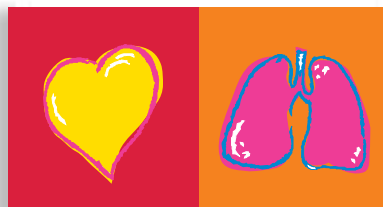
### Hardware options:

- Equipment trolley
- External printer
- Internal SCHILLER Communication Module with optional built-in analogue modem

Technical Data are subject to change without notice.



Your specialist:



# SCHILLER

www.schiller.ch

The Art of Diagnostics